

## Harlem Yacht Club Twilight Race Sailing Instructions

**Rules:** This race will be governed by the current Racing Rules of Sailing

**Schedule.** There is one race with the first warning signal at 19:00.

**Communications.** The race committee will communicate on VHF71.

### Starting Area and Procedure.

There will be two divisions using **Class Flag 'White'** and **Class Flag 'Green'**

Signal	Flag	Sound	Minutes To Start
Warning	Class flag	1 Horn	5
Preparatory	P flag added	1 Horn	4
One Minute	P flag lowered	1 Horn	1
Start	Class flag lowered	1 Horn	0

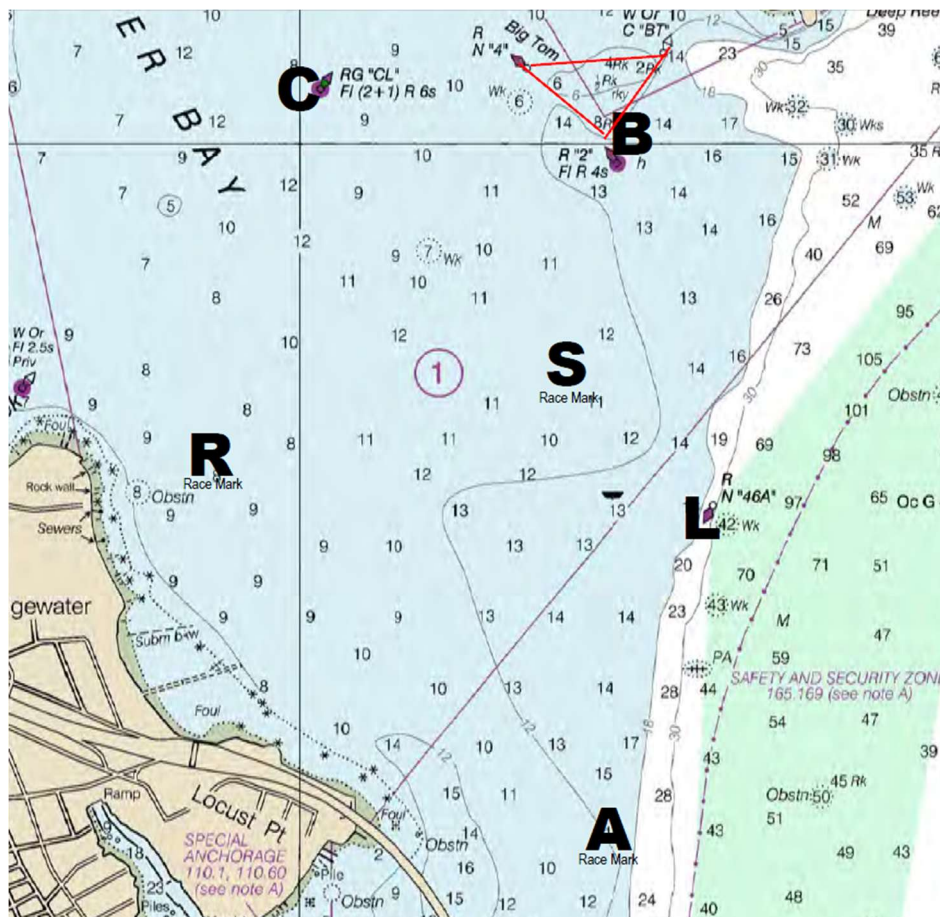
Classes will be started separately or together as directed by the Race Committee on VHF 71

### The Course:

Start and Finish will be between the RC boat and the C (CL) Mark.

The Turning Marks for each division will be announced on VHF 71.

Mark Sheet.



## Safety.

Any yacht leaving the race course before finishing will notify the Race committee on VHF 71.