



Sailing Instructions – 2020 Ben Bates Double-Handed Regatta

HARLEM YACHT CLUB
September 13 2020

RULES

1.0 The regatta shall be governed by the Racing Rules of Sailing 2017-2020 (RRS), the Notice of Race (NOR) and these Sailing Instructions. In the event of a conflict, these Sailing Instructions shall prevail.

1.1 Crew may consist of no more than two adults.

SCHEDULE

2.0 There up to two races on Sunday, September 13th.

2.1 The warning signal will be no earlier than 12:30 PM.

COMMUNICATIONS

3.0 The race committee will communicate on VHF 71.

CLASSES

4.0 See scratch sheet for division assignments and classes.

RATINGS

5.0 If an entered yacht does not have a YRALIS PHRF certificate, a PHRF rating will be assigned by the organizing authority in accordance with the YRA-LIS base rating database and standard adjustments.

START AND FINISH

6.0 The start and finish line will be between an orange flag on the race committee yacht and the nearest mark, which may be a flag, an inflatable mark or any permanent mark on the attached chart.

STARTING PROCEDURE

7.0 Starting signals will be made in accordance with RRS 26. Class flags are Green for Division 1 and White for Division 2.

Signal	Flag	Sound	Minutes To Start
Warning	Class flag	1 Horn	5
Preparatory	P	1 Horn	4
One Minute	P lowered	1 Horn	1
Start	Class flag lowered	1 Horn	0

COURSES

8.0 The course to be sailed will be signaled with letters posted on a course board on the RC yacht and broadcast on VHF 71 prior to the warning signal for each division.

8.1 See the attached chart for approximate mark locations.

8.2 Marks are to be rounded to port.

RETIREMENT

9.0 A yacht that retires from a race shall notify the race committee before leaving the race area.

PENALTIES

10.0 A yacht may take a one-turn penalty when she may have broken a rule of Part 2 while racing.

PROTESTS

11.0 A yacht intending to protest shall inform the race committee prior to leaving the race area. Protests must be submitted by email to race@hyc.org within 90 minutes of the last yacht's finish.

TIME LIMIT

12.0 Any yacht not finished by 5:00 PM will be scored DNF

SCORING

13.0 Races will be scored using time-on-time using the formula $F = 600/(480+PHRF)$.

13.1 One race completed will constitute a series.

Postponement Signals



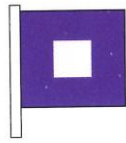
↑ •• ↓ •

Shortened Course



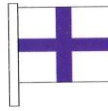
↑ ••

Preparatory



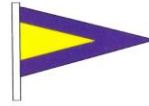
↑ • ↓ —

Recall Signals



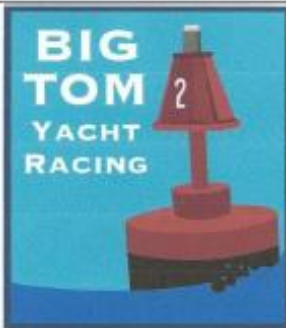
↑ •

X Individual recall.



↑ •• ↓ •

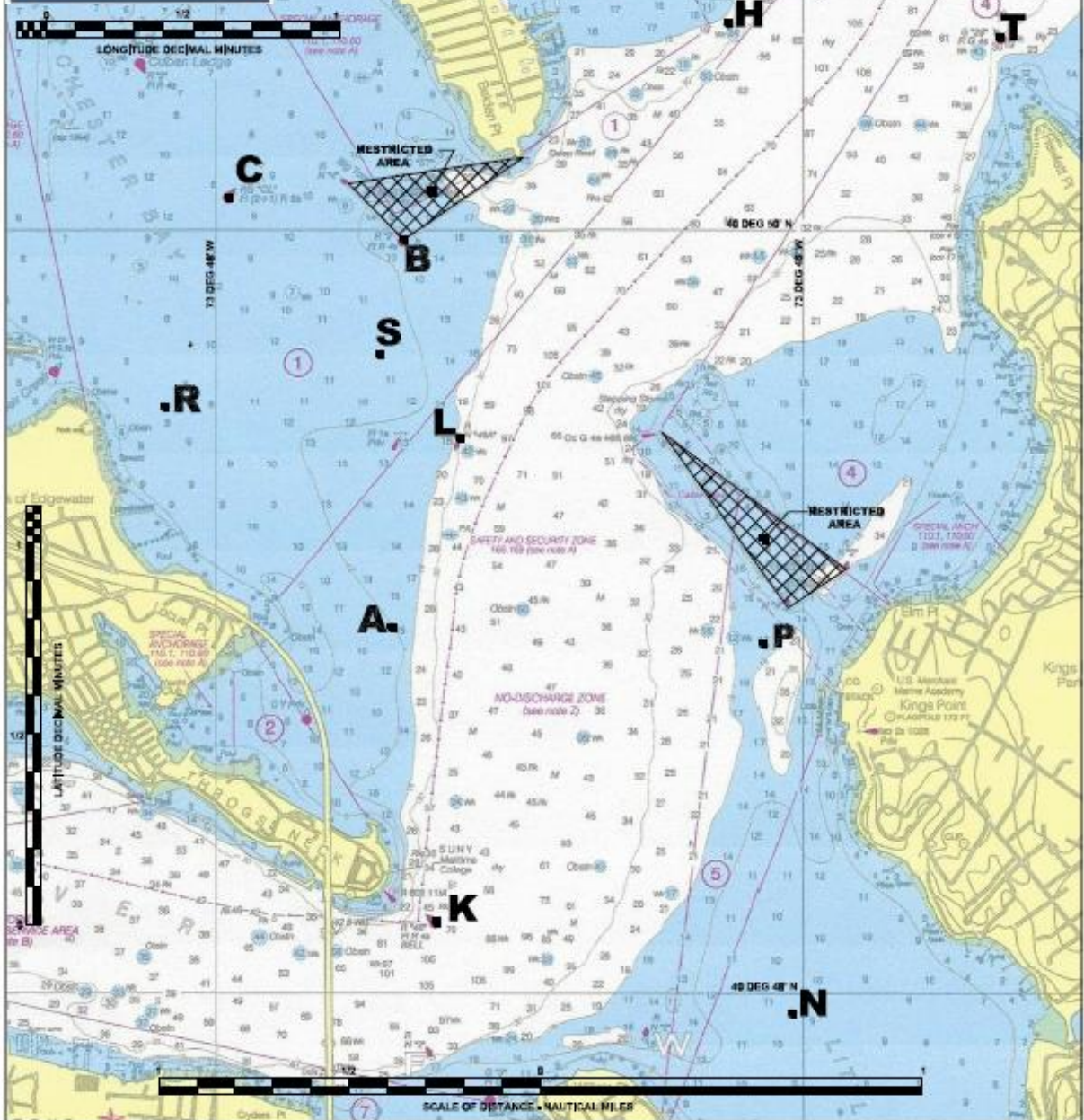
First Substitute General recall.



BIG TOM YACHT RACING PROPOSED COURSE MARKS 2020

06 FEB 2020

- NOTES:**
1. EXCEPT WHEN STARTING AND FINISHING, SAILING THROUGH THE START LINE IS PROHIBITED.
 2. ALL MARKS TO BE ROUNDED TO PORT.
 3. EXCEPT WHEN ROUNDED MARK 'B' SAILING THROUGH RESTRICTED AREAS IS PROHIBITED.



PROPERTY OF BIG TOM YACHT RACING - FOR GENERAL MARK INFORMATION ONLY - NOT TO BE USED FOR NAVIGATION !!!